



 daqscribe
ETHERNET PACKET | CAPTURE • RECORD • PLAYBACK

DDR7000-R series - 2020

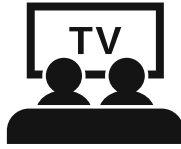
Applications

Wireless comms



- ✓ remote radio
- ✓ 5G baseband
- ✓ μ /mmWave
- ✓ MIMO
- ✓ O-RAN

Cable TV access



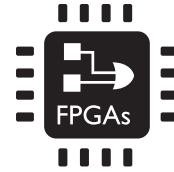
- ✓ R-PHY node
- ✓ DOCSIS 3.1

Radar



- ✓ phased array radar
- ✓ synthetic aperture radar
- ✓ 3D radar

Dev-to-deploy tool



- ✓ FOGA+RFSoc
- ✓ GPGPU
- ✓ FPGA

Autonomous vehicle



- ✓ LiDAR
- ✓ IoT (i.e., MIPI® DSI)
- ✓ Test & Measurement

Features

DDR7000-R-100G

Standard dual 100GbE-Link capture & record system

- ✓ Max system throughput: 100Gbps
- ✓ Storage: 25TB, 50TB, 180TB SSDs
- ✓ SWaP: H 7" (178mm) x W 17.2"(437mm) x D 20.5" (521mm) | 50bs(24kg) | ~865W

100GbE-links x 2

DDR7000-R-40G-2

Standard dual 40GbE-Link capture & record system

- ✓ Max system throughput: 100Gbps
- ✓ Storage: 12TB, 25TB, 50TB, 180TB SSDs
- ✓ SWaP: H 7" (178mm) x W 17.2"(437mm) x D 20.5" (521mm) | 50bs(24kg) | ~865W

40GbE-links x 2

DDR7000-R-25G-4

Standard 4 x 25GbE-Link capture & record system

- ✓ Max system throughput: 100Gbps
- ✓ Storage: 25TB, 50TB, 180TB SSDs
- ✓ SWaP: H 7" (178mm) x W 17.2"(437mm) x D 20.5" (521mm) | 50bs(24kg) | ~865W

25GbE-links x 4 **10GbE-links** optional **10/100/1000MbE links** optional

DDR7000-R-10G-8

Standard 8 x 10GbE-Link capture & record system

- ✓ Max system throughput: 100Gbps
- ✓ Storage: 25TB, 50TB, 180TB SSDs
- ✓ SWaP: H 7" (178mm) x W 17.2"(437mm) x D 20.5" (521mm) | 50bs(24kg) | ~865W

10GbE-links x 8

Recorders



front bezel



front view



rear view

Features

DDR7000-R-PB

Standard petabyte storage 100GbE-Link capture & record system

- ✓ Max system throughput: 100Gbps
- ✓ Storage: 1.7PB
- ✓ SWaP: H 1.75" (45mm) x W 17.2" (437mm) x D 27.5" (700mm) | 50bs(24kg) | ~850W

10GbE-links x 8

25GbE-links x 4

40GbE-links x 2

100GbE-links x 2

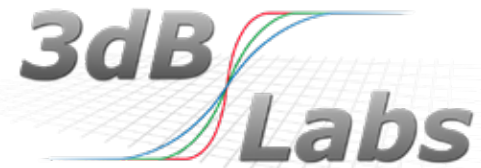
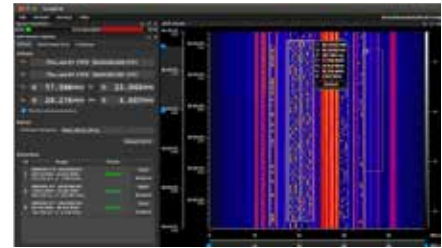


Recorders

Highlights

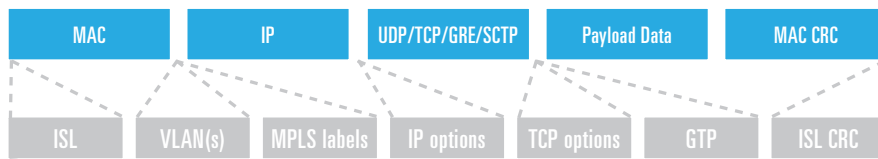
- ✓ an excellent engineering development-to-deployment tool.
- ✓ capture 100% packet-data at the full 100Gbps link-rate
- ✓ data recorded and assured on enterprise SSDs
- ✓ rapid system-data offload options

A versatile processing platform (software examples)



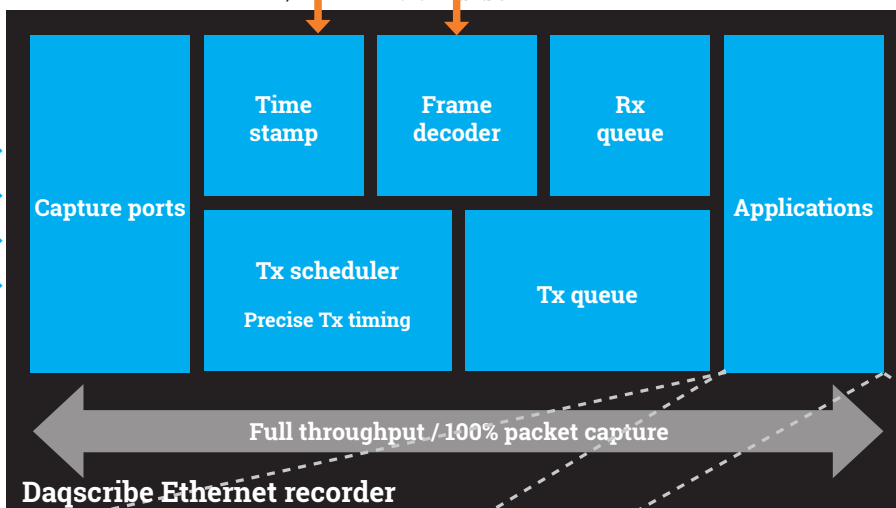
SIGNALEYE
GENERAL DYNAMICS
Information Technology

SYSTEM BLOCK DIAGRAM



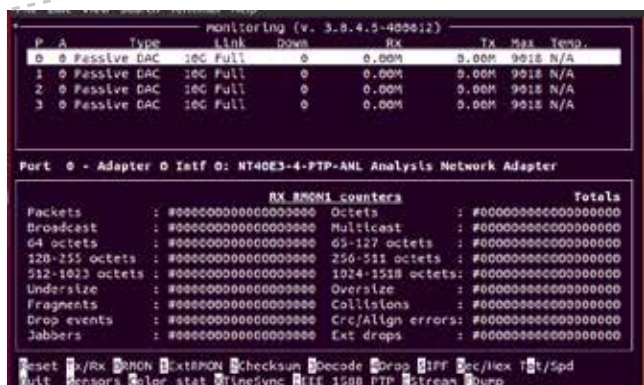
IPV4, IPV6, UDP, TCP, GRE, SCTP, EtherIP and GTP
IPPS, IEEE1588

10/100/1000MbE/RJ45
10GbE / SFP+
25GbE / SFP28
40GbE / QSFP+



Daqscribe Ethernet recorder

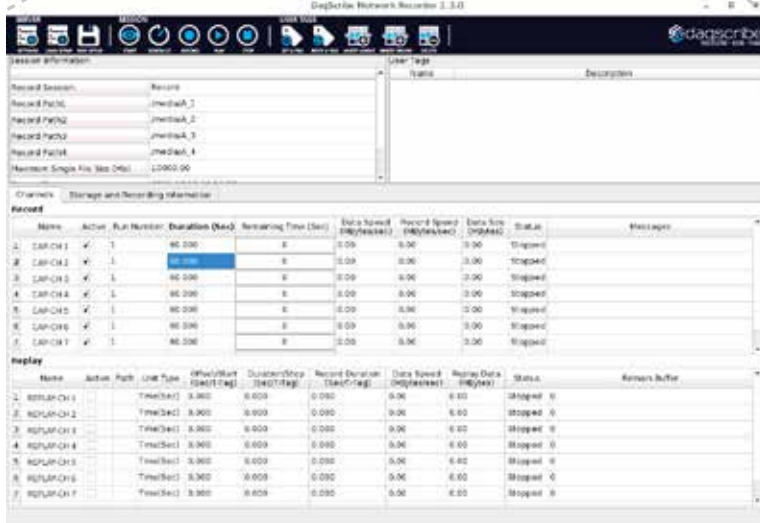
Daqscribe network monitoring utility



Monitoring tool main features

- ✓ Port statics / RMON counters RX - TX
- ✓ Checksum error counters
- ✓ Packet decode counters
- ✓ Drop counters
- ✓ IPF table counters
- ✓ Sensor monitoring
- ✓ PPS statistics
- ✓ IEEE 1588 PTP

Daqscribe netREC software



- ✓ Capture/record/playback using simple command line utilities.
- ✓ Playback once or loop-back from a recorded file back to a port.
- ✓ netREC software suite provides full blown record/playback features for long-term operations.

Daqscribe

8 Inverness Drive, Suite 102, Centennial, CO 80112

email: contact@daqscribe.com

phone: 1 (303) 220-7457

fax: 1 (303) 220-7450

daqscribe.com

facebook.com/daqscribe

twitter.com/daqscribe

linkedin.com/company/3578342

© 2001-2020 by Daqscribe.

All Rights Reserved.